

**Anti-Ki67 MKI67 Rabbit Monoclonal Antibody**  
**Catalog # ABO13385****Specification****Anti-Ki67 MKI67 Rabbit Monoclonal Antibody - Product Information**

Application	WB, IHC, IF, ICC, FC
Primary Accession	<a href="#">P46013</a>
Host	Rabbit
Isotype	Rabbit IgG
Reactivity	Human
Clonality	Monoclonal
Format	Liquid

**Description**

Anti-Ki67 MKI67 Rabbit Monoclonal Antibody . Tested in WB, IHC, ICC/IF, Flow Cytometry applications. This antibody reacts with Human.

**Anti-Ki67 MKI67 Rabbit Monoclonal Antibody - Additional Information**

**Gene ID** 4288

**Other Names**

Proliferation marker protein Ki-67, Antigen identified by monoclonal antibody Ki-67, Antigen KI-67, Antigen Ki67, MKI67 (<a href="http://www.genenames.org/cgi-bin/gene\_symbol\_report?hgnc\_id=7107" target="\_blank">HGNC:7107</a>)

**Calculated MW**

358694 MW KDa

**Application Details**

WB 1:500-1:2000<br>IHC 1:50-1:200<br>ICC/IF 1:50-1:200<br>FC 1:50

**Subcellular Localization**

Nucleus. Nucleus, nucleolus. Chromosome. Predominantly localized in the G1 phase in the perinucleolar region, in the later phases it is also detected throughout the nuclear interior, being predominantly localized in the nuclear matrix. In mitosis, it is present on all chromosomes.

**Contents**

Rabbit IgG in phosphate buffered saline, pH 7.4, 150mM NaCl, 0.02% sodium azide and 50% glycerol, 0.4-0.5mg/ml BSA.

**Immunogen**

A synthesized peptide derived from human Ki67

**Purification**

Affinity-chromatography

**Storage**

**Store at -20°C for one year. For short term storage and frequent use, store at 4°C for**

up to one month. Avoid repeated  
freeze-thaw cycles.

## Anti-Ki67 MKI67 Rabbit Monoclonal Antibody - Protein Information

**Name** MKI67 ([HGNC:7107](#))

### Function

Protein that associates with the surface of mitotic chromosomes and acts both as a chromosome repellent during early mitosis and chromosome attractant during late mitosis (PubMed:<a href="http://www.uniprot.org/citations/27362226" target="\_blank">27362226</a>, PubMed:<a href="http://www.uniprot.org/citations/32879492" target="\_blank">32879492</a>, PubMed:<a href="http://www.uniprot.org/citations/35513709" target="\_blank">35513709</a>, PubMed:<a href="http://www.uniprot.org/citations/39153474" target="\_blank">39153474</a>). Required to maintain individual mitotic chromosomes dispersed in the cytoplasm following nuclear envelope disassembly (PubMed:<a href="http://www.uniprot.org/citations/27362226" target="\_blank">27362226</a>). During early mitosis, relocalizes from nucleoli to the chromosome surface where it forms extended brush structures that cover a substantial fraction of the chromosome surface (PubMed:<a href="http://www.uniprot.org/citations/27362226" target="\_blank">27362226</a>). The MKI67 brush structure prevents chromosomes from collapsing into a single chromatin mass by forming a steric and electrostatic charge barrier: the protein has a high net electrical charge and acts as a surfactant, dispersing chromosomes and enabling independent chromosome motility (PubMed:<a href="http://www.uniprot.org/citations/27362226" target="\_blank">27362226</a>). During mitotic anaphase, the MKI67 brush structure collapses and MKI67 switches from a chromosome repellent to a chromosome attractant to promote chromosome clustering and facilitate the exclusion of large cytoplasmic particles from the future nuclear space (PubMed:<a href="http://www.uniprot.org/citations/32879492" target="\_blank">32879492</a>, PubMed:<a href="http://www.uniprot.org/citations/39153474" target="\_blank">39153474</a>). Mechanistically, dephosphorylation during mitotic exit and simultaneous exposure of a conserved basic patch induce the RNA-dependent formation of a liquid- like condensed phase on the chromosome surface, promoting coalescence of neighboring chromosome surfaces and clustering of chromosomes (PubMed:<a href="http://www.uniprot.org/citations/39153474" target="\_blank">39153474</a>). Binds premature ribosomal RNAs during anaphase; promoting liquid-liquid phase separation (PubMed:<a href="http://www.uniprot.org/citations/28935370" target="\_blank">28935370</a>, PubMed:<a href="http://www.uniprot.org/citations/39153474" target="\_blank">39153474</a>). Binds DNA, with a preference for supercoiled DNA and AT-rich DNA (PubMed:<a href="http://www.uniprot.org/citations/10878551" target="\_blank">10878551</a>). Does not contribute to the internal structure of mitotic chromosomes (By similarity). May play a role in chromatin organization; it is however unclear whether it plays a direct role in chromatin organization or whether it is an indirect consequence of its function in mitotic chromosome (PubMed:<a href="http://www.uniprot.org/citations/24867636" target="\_blank">24867636</a>).

### Cellular Location

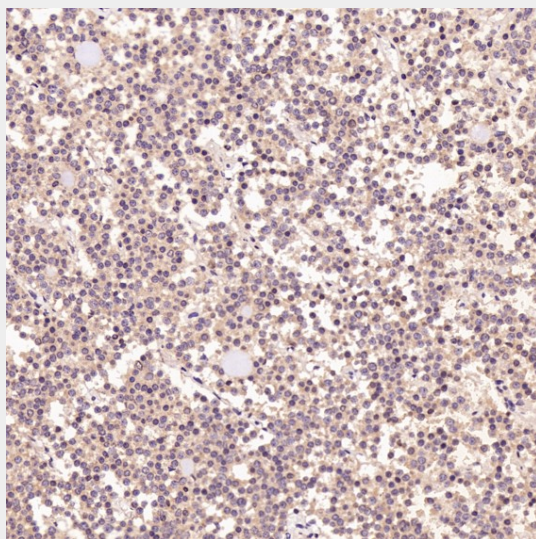
Chromosome. Nucleus. Nucleus, nucleolus. Note=During early mitosis, relocalizes from nucleoli to the surface of the mitotic chromosome, the perichromosomal layer, and covers a substantial fraction of the mitotic chromosome surface (PubMed:27362226) Associates with satellite DNA in G1 phase (PubMed:9510506). Binds tightly to chromatin in interphase, chromatin-binding decreases in mitosis when it associates with the surface of the condensed chromosomes (PubMed:15896774, PubMed:22002106). Predominantly localized in the G1 phase in the perinucleolar region, in the later phases it is also detected throughout the nuclear interior, being predominantly localized in the nuclear matrix (PubMed:22002106)

## Anti-Ki67 MKI67 Rabbit Monoclonal Antibody - Protocols

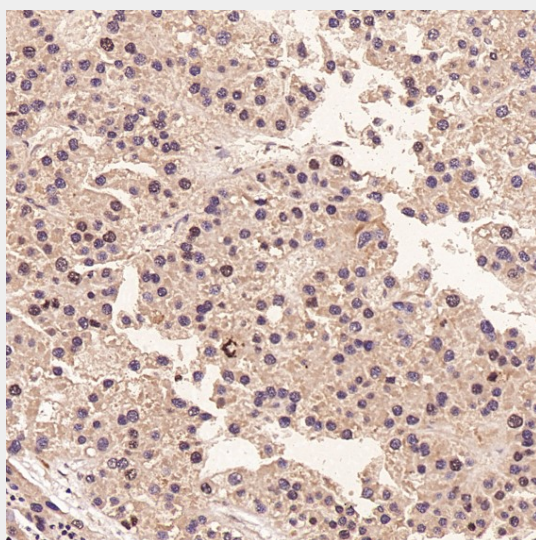
Provided below are standard protocols that you may find useful for product applications.

- [Western Blot](#)
- [Blocking Peptides](#)
- [Dot Blot](#)
- [Immunohistochemistry](#)
- [Immunofluorescence](#)
- [Immunoprecipitation](#)
- [Flow Cytometry](#)
- [Cell Culture](#)

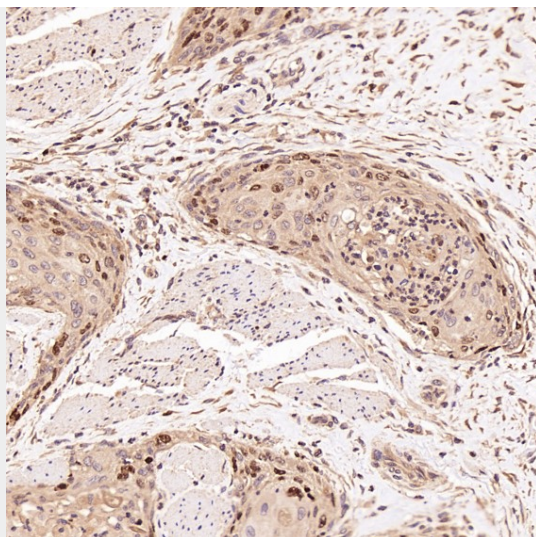
#### **Anti-Ki67 MKI67 Rabbit Monoclonal Antibody - Images**



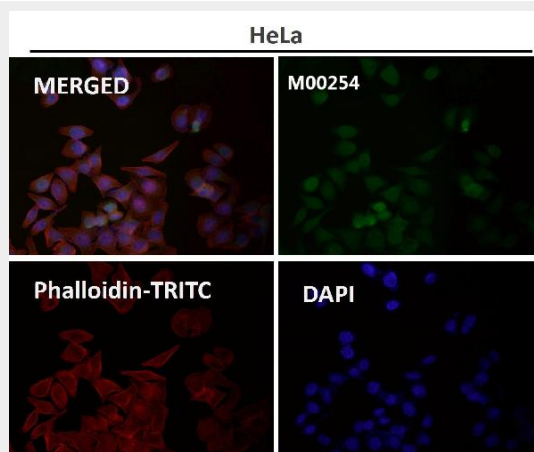
Immunohistochemical analysis of paraffin-embedded Human pituitary tumor, using the Antibody at 1:3000 dilution.



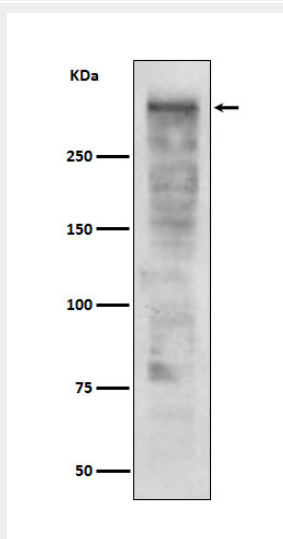
Immunohistochemical analysis of paraffin-embedded Human liver cancer, using the Antibody at 1:3000 dilution.



Immunohistochemical analysis of paraffin-embedded Human esophageal carcinoma, using the Antibody at 1:3000 dilution.

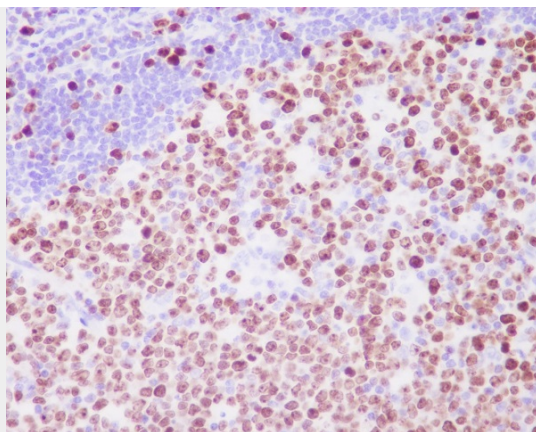


Immunofluorescent analysis using the Antibody at 1:500 dilution.

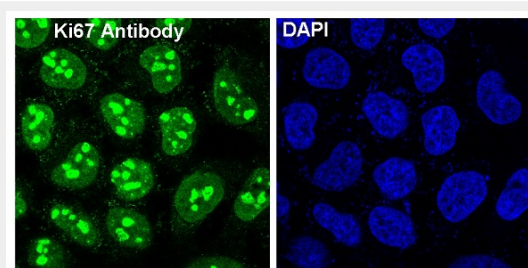


Western blot analysis of Ki67 expression in Ramos cell lysate.





Immunohistochemical analysis of paraffin-embedded human tonsil, using Ki67 Antibody.



Immunofluorescent analysis of HeLa cells, using Ki67 Antibody.